

PLAYMORE

Order Processing

HOW TO ORDER

1 Choose Design



Sublimation

Playmore are market leaders in Sublimation printing. Using the process we are able to put your unique design onto fabric with crystal clear clarity. Sublimation printing can incorporate any number of colours, logos, fades and intricate detailing. Only your imagination can stop the endless possibilities.

Sublimation printing can use any pantone colour. Exact colour matching is available.

Cut & Sew

Cut and Sew is an older method of production, sewing different panels together to get the design that is required. Cut and Sewn items need to have embellishments for logos, numbers and design prints which all cost additional money.

Cut and Sewn items are limited to stock factory colours listed below.

2 Choose Colour

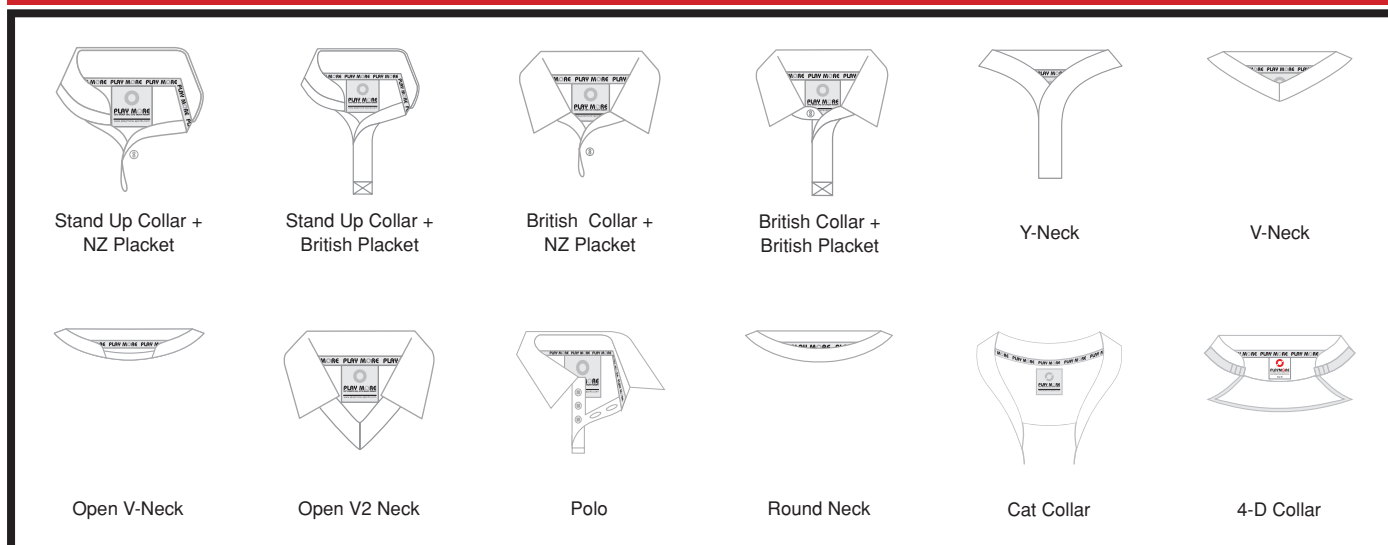
Sublimation

White €0122	Black €0127	Cream Pantone 5247c	Grey €0519	Deep Grey Pantone 447	Chocolate Pantone 476c
Pige Green Pantone 360c	Emerald Green €0121	Bottle Green €0129	Purple €0520	Peach Pink €0124	Pink Pantone 236
Canary Yellow €0117	Amber €0116	Orange Pantone 021c	Scarlet Red €0541	Maroon €0118	Hot Pink Pantone 213c
Powder Blue Pantone 278c	HeBy Sky Pantone 279c	Sky Blue €0125	Reflex Blue €0119	Navy Blue €0123	

Cut & Sew

White €0122	Black €0127	Cream Pantone 5247c	Grey €0519
Emerald Green €0121	Bottle Green €0129	Purple €0520	Peach Pink €0124
Amber €0116	Orange Pantone 021c	Scarlet Red €0541	Maroon €0118
Canary Yellow €0117	Sky Blue €0125	Reflex Blue €0119	Navy Blue €0123

3 Choose Collar

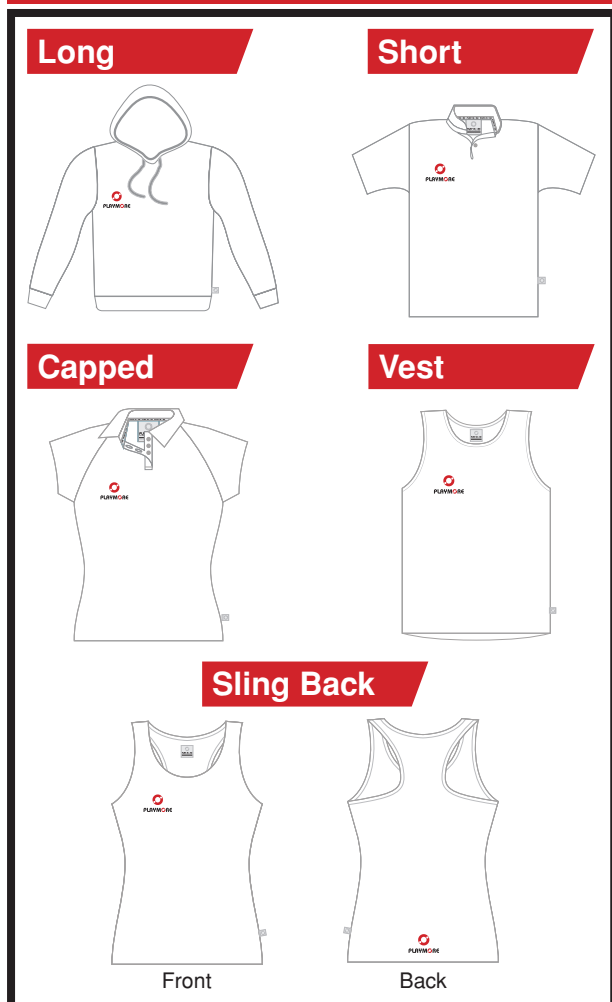


Collar Information

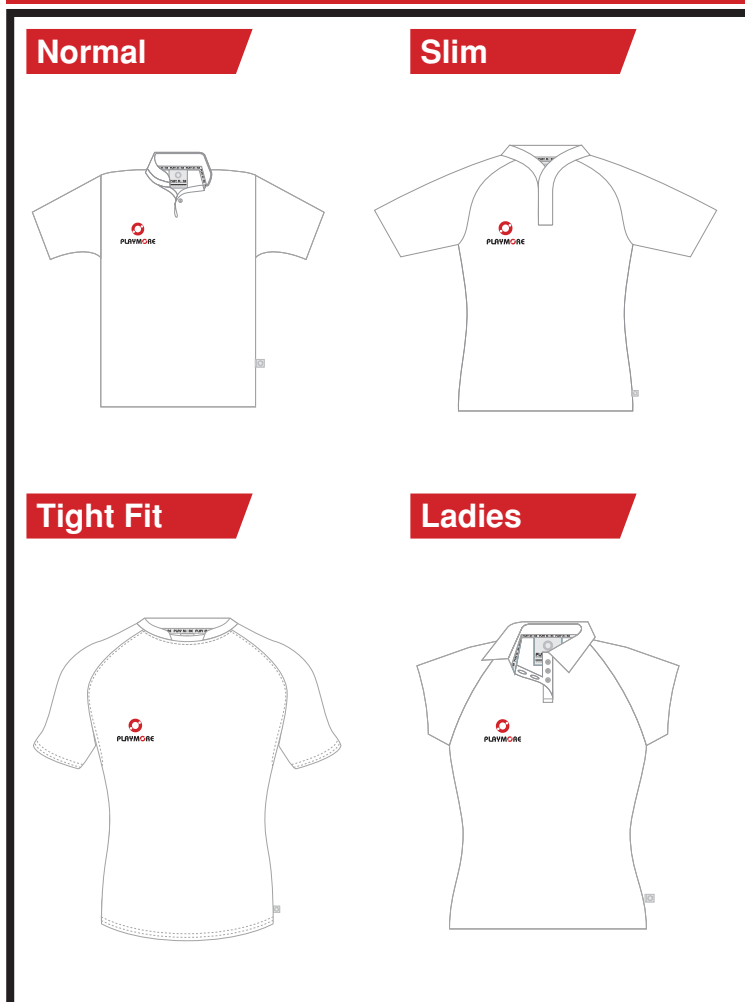
Being a bespoke service Playmore gives you as many design options as possible. There are some design restraints.

- Stand-up / British / Y collars are specifically designed for Rugby Union and League
- 4-D Collar is only available with Playmore's 4-way stretch rugby shirt
- Cat collar has been designed for Playmore's Touch and Pass kit
- V neck / Open V neck / Open V2 Neck / are specially designed for Football

4 Choose Sleeve



5 Choose Cut

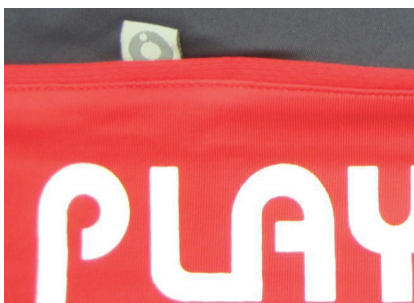


6 Choose Embellishment

Embroidery



Heat Sealed



Screen Printing



Artwork Decoration

Embroidery

Embroidery is a traditional stitching method to put logos, crests and badges and text onto garments and kit. Embroidery still has a place on many on and off field garments due to its professional finish. With embroidery we are able to match your pantone colours exactly if you require.

Heat seal and Screen Print

Heat Seal and Screen print are two different methods to apply numbers, larger logos, graphics and names to shirts or other garments if sublimation printing has not been used.

Heat Sealing is applying plastic letters or numbers to garments. The pieces are heat pressed onto the surface of the fabric. Heat Sealing is applied to names and numbers and is perfect for individualization. Heat Sealing can only be provided in one colour at a time. There are no set-up costs associated with heat sealing. Choice of fonts is available.

Screen printing involves ink printing the logos or graphics onto the garments. Used for more simple designs screen printing does not give the clarity of sublimation printing. Screen printing can use a number of different colours per print. Colour gradient can be applied whilst applying screen printing to garments.



7 Artwork Requirements

Our Software can open the following file formats. If you are unsure of what to provide please forward this sheet on to your graphics person.

CorelDraw

All versions up to X4 supported

File Formats .cdr

All fonts should be converted to curves

Adobe Illustrator

All versions up to CS3

File Formats .ai or .eps file.

Embed or include all linked images

All Fonts should be converted to outlines.

Adobe Photoshop

All versions up to CS3

File Formats .psd or .tif file.....will consider another different Format

CMYK (Four Colour Process) - 300dpi at 100% print size.

Do not flatten the Photoshop file if you created it with layers as it is quicker & easier for adjusting the file to print to have the all the original layers

(unless file: jpg, we can help to remove the background.)

Please rasterize all fonts contained within Photoshop images before submitting

Do not include the Background (e.g. T-shirt colour) on the same layer as the artwork to be printed. CMYK artwork should always be supplied on a transparent background

Embroidery

File Types Vector Files formats .eps, .ai, .cdr

Bitmap Files formats .jpg, .bmp, .tif, .psd, .png (All over 300dpi)

With the embroidery we have to redraw the complete logo regardless of the art provided.

If a bitmap, please make sure it is a reasonable size 300 dpi file.

PMS colours are best to match to as computer monitors are all different.

Screen Printing - Spot Colours

File Types Vector Files formats .eps, .ai, .cdr

With the screenprinting we have to separate the colours and bitmaps make this very difficult to do this.

Vector files give the best reproduction and are the easiest for us to work with.

PMS colours need to be specified and also the logo should be sized

Screen Printing - 4 Colour Process Printing

File Types Vector Files formats .eps, .ai, .cdr

Bitmap Files formats .jpg, .bmp, .tif, .psd, .png (All over 300dpi)

With Process printing we can accept bitmaps as well as vector files. For best results make your bitmap 1:1 size. If there are any areas in the image that need to be an exact PMS we can add 1 spot colour, please indicate when sending. As there is a lot of variation in monitors and printers a hard copy printout of the file helps as we then have something to match to.

Transfer - Digital (Sublimation)

File Types Vector Files formats .eps, .ai, .cdr

Bitmap Files formats .jpg, .bmp, .tif, .psd, .png (All over 300dpi)

Digital transfers are a CMYK process and therefore we can accept bitmaps. Please size 1:1 and make sure that the image is at least 300dpi.

The printer can achieve 720dpi so the bigger the better the print will be.

Transfer - Screen Printed Transfers

File Types Vector Files formats .eps, .ai, .cdr

With the screen printed transfers we have to separate the colours and bitmaps make this very difficult to do this.

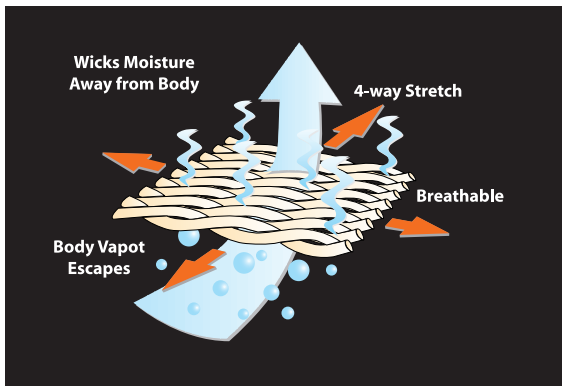
Vector files give the best reproduction and are the easiest for us to work with.

PMS colours need to be specified and also the logo should be sized.

8

Fabric Choice

4D-Stretch CoolDRY 240

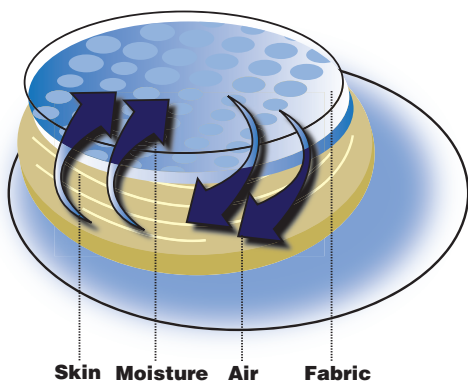


4D stretch is the latest fabric to be developed and added to Playmore's range high performance range. The 4D stretch is designed to work with the natural movement planes of the human body, as a result there will never be any restriction for the athlete.

4D-stretch still maintain the properties of the CoolDRY Pro but offers the comfort and feel needed at the top level. The moisture management system is breathable maintaining a cool and comfortable athlete.

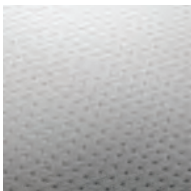
You may be wondering what the 4D stands for. Due its body fitting and movement enhancing properties fit 4D stretch helps you move in the 4th dimension, TIME!!!!

CoolDRY 280g/220g



CoolDRY 280 and 220 is high performance fabric suitable for everything sport can throw at it. CoolDRY has been designed to move moisture away from you body. The specially treated fabric has been developed to keep the athlete cool and dry in the heat of the battle. The heavier weight is more suitable to the colder temperate climate whilst the 220g is perfect for the heat and humidity of Asia. Perfect for sublimation.

CoolDRY 140g



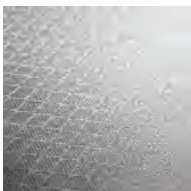
Playmore's latest development in the CoolDRY range is the Sporty eyelet. Developed for extremely hot and humid climates, extra breath-ability has been added with more porous fabric. This allows greater airflow through the garment. As a result the athlete can remain the optimal state for high performance work. The light weight eyelet material.

CoolDRY Eyelet 160g



CoolDRY eyelet is a lightweight material that still boasts the same qualities as CoodDRY 280 and 220. Not as heavyweight as the standard CoolDRY, the CoolDRY eyelet is perfect for a wide range of sports. Due to it breathable properties it makes it the number one fabric when the athlete wants to be cool and comfortable. Perfect for sublimation.

Ripstop Nylon Lightweight/Heavyweight



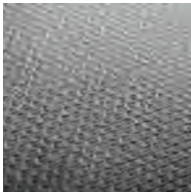
Our toughest fabric is designed specially to withstand the high contact session that take place in sport. The lightweight fabric is designed for an shower proof outer shell. The heavy weight ripstop is used on a number of prd.

Cotton CVC 220g



Woven cotton makes the perfect traditional polo shirt. CVC has a smooth finish that looks world class with embroidery to add the finishing touches. Cotton CVC is also one of the fabrics we used for a normal T-shirt. Cotton CVC is only used for Cut and Sewn and cannot be sublimated onto.

Cotton Pique 220g



Cotton Pique is rougher style to CVC. Pique is only used for Polo Shirts to gain the classic stylish look and feel. Pique cannot be sublimated onto and therefore only used for Cut and Sew.

CoolDRY Sporty eyelet 140g

Playmore's latest development in the CoolDRY range is the Sporty eyelet. Developed for extremely hot and humid climates, extra breath-ability has been added with more porous fabric. As a result the athlete can remain at the optimal state for high performance work. The light weight eyelet material. Sporty eyelet has been specifically deisgned to be used with sublimation printing, as a result it does not alter its properties.

Sporty Fabric 75d

Sporty Fabric 75 is Playmore top range for Football. Developed for the cooler climates this lightweight fabric has different properties to the CoolDRY material. A more standard fabric.

Fleece 300g

Playmore's standard fleece is extremely warm. Used specifically for Hoodies.

Polyester Lycra 220g

Developed for dresses, skirts and undershorts, polyester lycra is perfect for netball and hockey. The smooth silky finish allows ease of movement for the athlete.

For further information on the materials please contact our sales team.

*Please note not all fabric are suitable for sublimation.

**Image clarity is dependant upon image quality supplied by customer.

Please refer to artwork guidelines for more information upon this subject matter.

	4D-stretch CoolDRY 240g	CoolDRY 280g	CoolDRY 220g	CoolDRY 140g	PolyTrio 160g	Eyelet 160g	Sports Eyelet 140g	Sporty Fabric 75D	Cotton Pique 220g	Cotton CVC 220g	Cotton CVC 280g	Micro Fleece 250g	Cotton Fleece 300g	Polyester Lycra 220g	Ripstop Nylon - Light	Ripstop Nylon - Heavy	Microfibre	Taslon
Rugby Shirt	•	•	•									•						
Hockey Shirt			•	•		•	•											
Hockey/Netball Dress/Top				•		•	•							•				
Football/Soccer Shirt				•		•		•										
Cricket Shirt					•													
Cricket Pullover					•													
Basketball Vest						•	•											
Ice Hockey				•														
Dragon Boating				•														
T Shirt						•	•			•								
Polo Shirt					•	•	•		•	•								
Singlet/Vest				•		•	•											
Hoody													•	•				
Lightweight Shell Top															•			•
Tracksuit Top/Jacket															•	•	•	•

* Mesh is often used as insert panels

* Cotton, polar fleece and mesh lining available

9 Size & Measurement



Unisex

Please use this information as a guide only. For more detailed information please contact one of our sales staff.

Normal/Slim		Tops -Rugby Shirt /Polo Shirt/T-shirt/Vest/Cricket shirt /Hoodie/Tracksuit/Fleece																		
Lable	12mth	18mth	24mth	3-4yr	5-6yr	7-8yr	9-10yr	11-12yr	13-14yr	2XS	XS	S	M	L	XL	2XL	3XL	4XL	5XL	6XL
To Fit (Recommended) Ladies						4	6	8	10	12	14	16	18	20	22	24				
To Fit (Recommended) Chest	23	24	25	27	28	30	32	34	35	36	38	40	42	44	46	48	50	52	54	56

Tight	Baselayers							
Lable	2XS	XS	S	M	L	XL	2XL	3XL
To Fit (Recommended) Chest	32-34	34-36	36-38	38-40	40-42	42-44	44-46	46-48

Normal	Shorts													
Lable	20"	22"	24"	26"	XXS	XS	S	M	L	XL	2XL	3XL	4XL	5XL
To Fit (Recommended) Waist	20	22	24	26	28	30	32	34	36	38	40	42	44	46

* Rugby Shorts - Loose cut.

* Leisure Shorts - Thinner/Slim cut. Please go up a size if you have larger thighs

Normal	Bottoms tracksuit/cricket trousers													
Lable	20"	22"	24"	26"	XXS	XS	S	M	L	XL	2XL	3XL	4XL	5XL
To Fit (Recommended) Waist	20	22	24	26	28	30	32	34	36	38	40	42	44	46

Normal	Socks					
Lable	2XS	XS	S	M	L	XL
To Fit (Recommended) Feet (EUROPE)	17 & Below	38-39	40-41	42-44	44-46	46+

Women Only

Normal	Skorts and Skirts									
Lable (inches)	24"	26"	28"	30"	32"	34"	36"	38"	40"	42"
To Fit Recommended Size	2	4	6	8	10	12	14	16	18	20

Normal	Netball Undershorts								
Lable	9/10	11/12	13/14	2XS	XS	S	M	L	XL
Recommended Size	4	6	8	10	12	14	16	18	20

Slim	Netball Dress								
Lable	4	6	8	10	12	14	16	18	20
Recommended Size	4	6	8	10	12	14	16	18	20

Men Only

Tight	Rugby Shirt (Muscle Fit)															
Lable	3-4yr	5-6yr	7-8yr	9-10yr	11-12yr	13-14yr	2XS	XS	S	M	L	XL	2XL	3XL	4XL	5XL
To Fit (Recommended) Chest	27	28	30	32	34	35	36	38	40	42	44	46	48	50	52	54

- Normal Cut : Slim Straight cutting style for a classic finish
- Cut : Tapered in at the waist for a more fitted finish
- Tight Fit Cut: Designed for a skin tight finish (*warning: only for the athletic and the brave!*)





PLAYMORE

Website: www.playmore-sports.com

Phone Playmore (Hong Kong): [+\(852\) - 3542 7695](tel:+85235427695)

Email Playmore (Hong Kong): sales@playmore-sports.com